

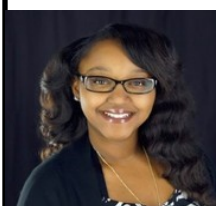
# Meet The Arc NW Staff

"Committed to building inclusive communities"



## **Gretchen Sanewsky - Executive Director**

Gretchen brings extensive experience developing inclusive faith communities and serving adults with disabilities in healthcare settings. She is committed to expanding on the Arc's strong foundation to grow efforts in *building inclusive communities through advocacy, support, and information.*



## **Latrice Wilborn - Office Manager**

Latrice manages The Arc NW's office and Fiscal Intermediary services. Latrice also helps individuals control and maintain needed financial supports including Social Security and Medicaid benefits.



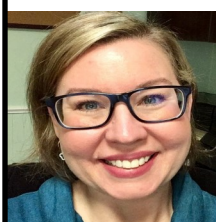
## **Michelle Driscoll - Advocacy & Community Resource Director**

Michelle helps individuals and their families with special education, community mental health, employment, housing, Social Security, Medicaid, Person Centered Planning, Self-Determination, future planning, and legal decision making. Michelle's passion for inclusive communities, experience, information and advocacy skills have resulted in many successful inclusive outcomes for individuals.



## **Beth Kohler - Director of Development**

As Director of Development, Beth's role is to develop a more robust fundraising program to better ensure the future of The Arc and the work it does on behalf of people with intellectual and development disabilities.



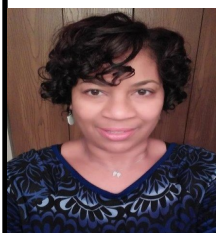
## **Chesley Giertz - Advocate and Fiscal Intermediary Program Assistant**

Chesley helps individuals and their families navigate the special education and community mental health systems. Chesley's passion for inclusive communities, experience, information and advocacy skills have resulted in many successful inclusive outcomes for individuals.



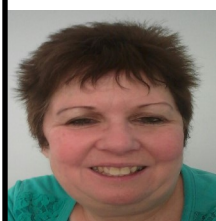
## **Sandra Dobson - Fiscal Intermediary Program Assistant**

Sandy helps individuals acquire and maintain eligibility for food stamps and Medicaid. Sandy also provides payroll services for directly hired support staff. She helps people control their individual budgets and monthly expenses.



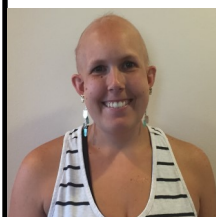
## **Vida Hunt - Fiscal Intermediary Program Assistant**

Vida helps maintain and submit required Medicaid documentation managed by The Arc NW Fiscal Intermediary services that supports individual budgets.



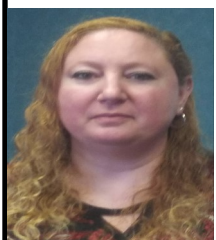
## **Lana Richardson - Lekotek Play Leader**

Lana helps children with disabilities realize their play abilities through monthly play sessions and toy loans. Lana is the Program Services Assistant for the Just Fun Club, Athletic Program, and Arc NW Membership database.



## **Katie Perkins - Lekotek Librarian**

Katie sanitizes and organizes over 2,000 toys in the Lekotek toy library. She maintains the toy storage areas and play rooms so everyone can enjoy a clean and safe play environment. Katie also maintains The Arc NW offices.



## **Tammy Clements**

Tammy supports the activities of The Arc of Northwest Wayne County's general office operations and manages the maintenance of Accounts, Financial Files and Records.